

Local self-determination, collective support

Adapting collective impact models
for disaster resilience, response and recovery

Katherine Ellis, CEO, Leadership Victoria
(formerly CEO, Youth Affairs Council Victoria (YACVic))

What is Collective Impact?

1. A Common Agenda

2. Mutually reinforcing activities

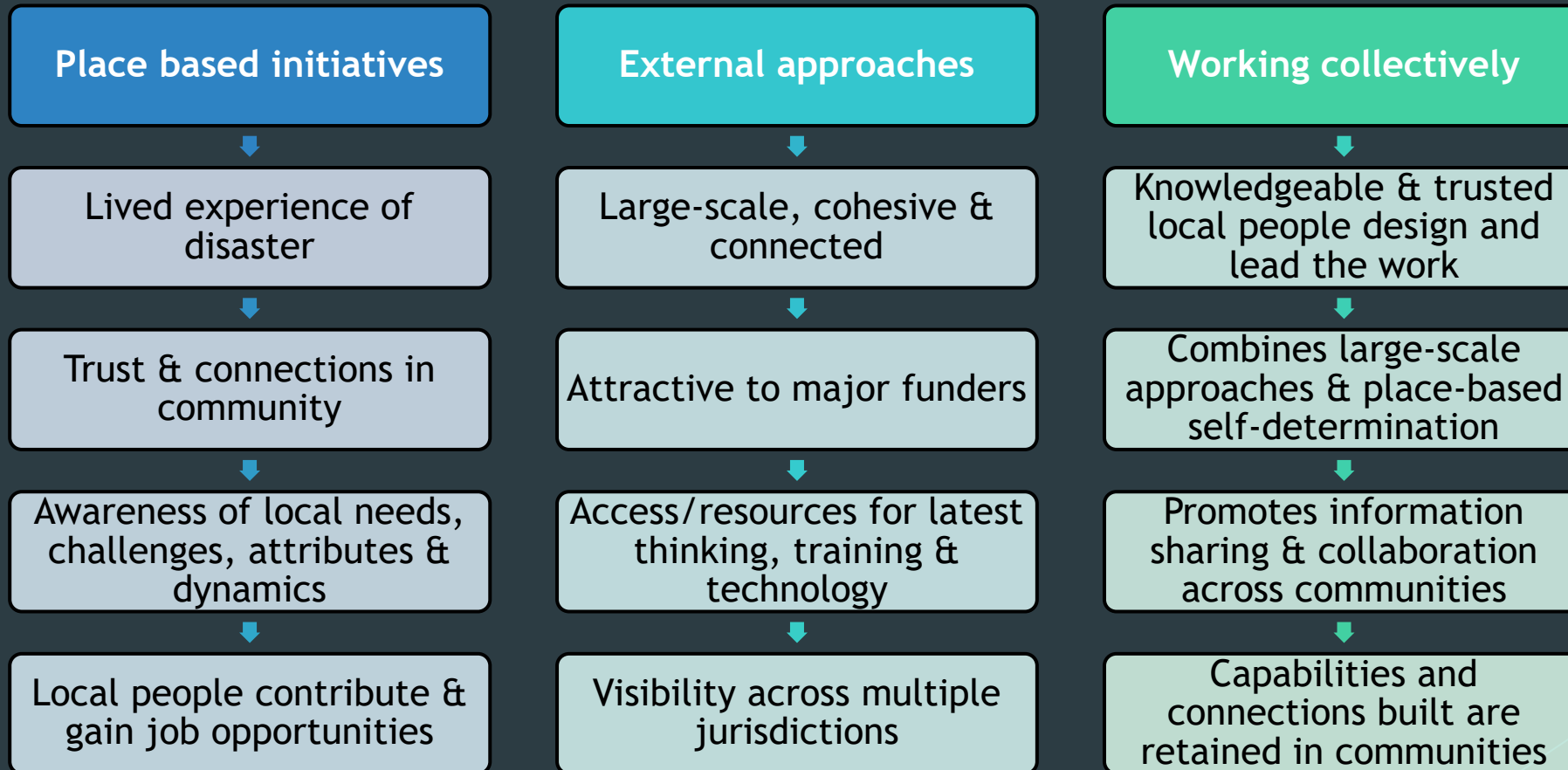
3. Shared Measurement

4. Continuous Communication

5. A “Backbone” Team



Why Collective Impact for Disaster Resilience?



Why Youth Participation?

Honours young people's rights as residents and citizens

Makes services & activities more relevant and engaging

Connects young people to their community

Builds intergenerational cooperation, trust and respect

Brings fresh ideas and different thinking

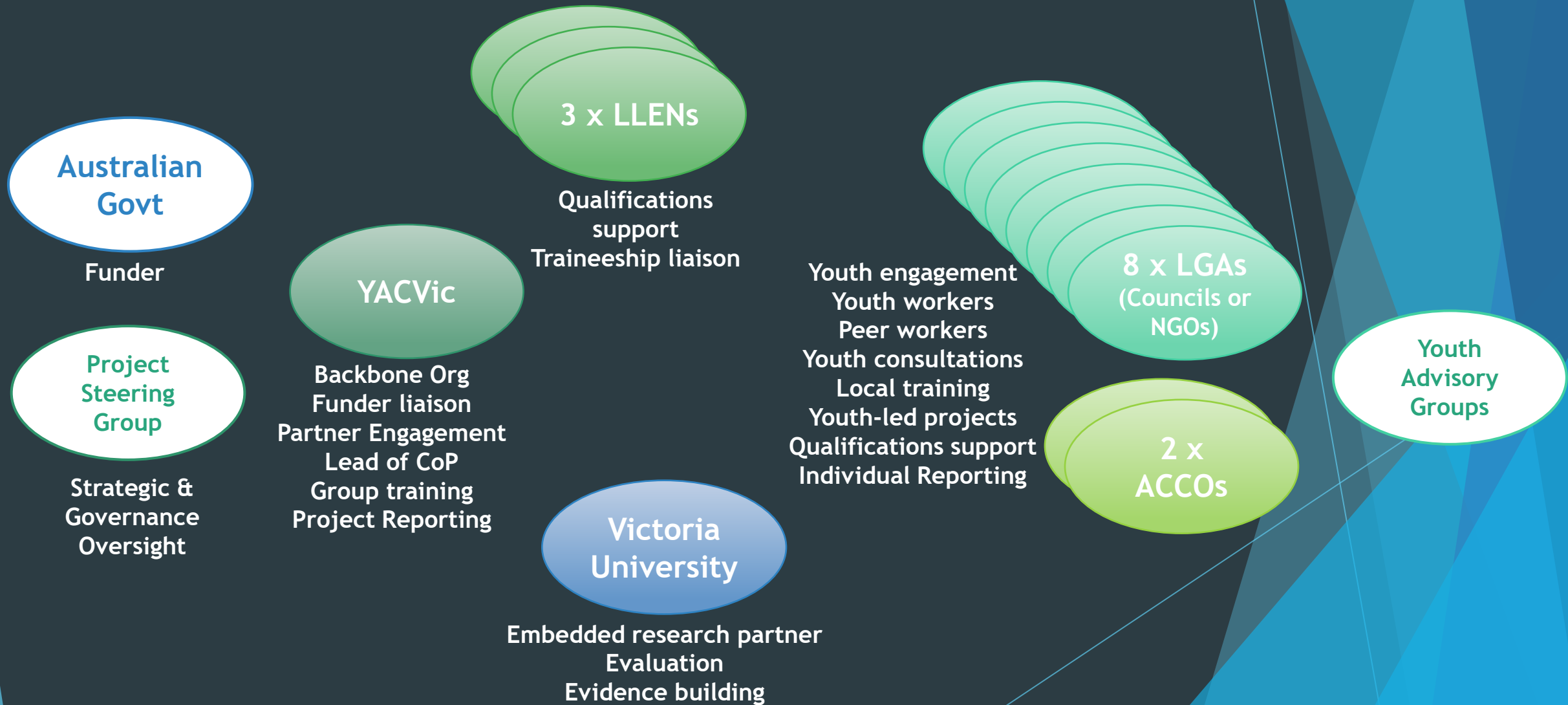
Builds young people's capabilities, connection & wellbeing



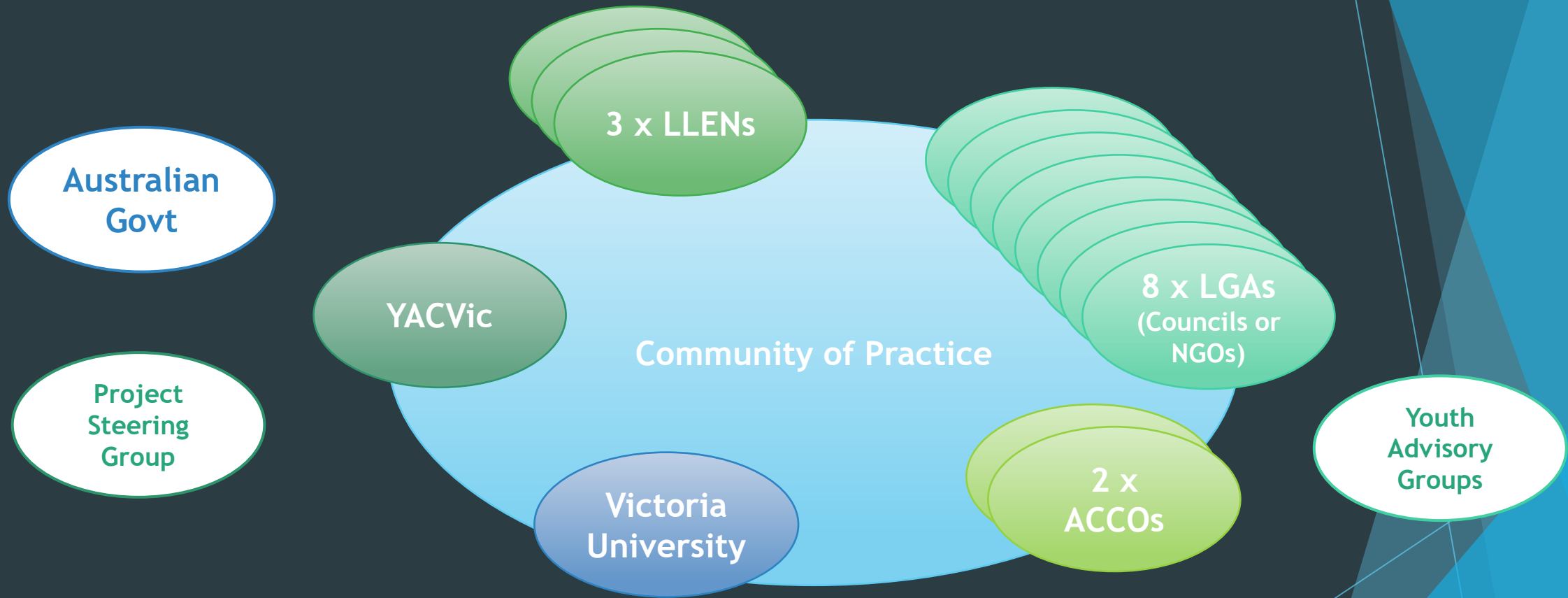
How? Working for Victoria (COVID pandemic)



How? *Future Proof* (Black Summer bushfire recovery)



How? *Future Proof* Project (bushfire recovery)



How? *Project Umbrella* (floods)



**Victorian
Government**

**Funder
Project Design**



YACVic

**Backbone Org
Funder liaison
Project Design
Partner Engagement
Training Delivery
Reporting
Evaluation**



**8 x Youth
NGOs**

**Local Project Design
Project Delivery**

What's been challenging?

Constrained project
timelines

Limited services &
capacity, especially
in rural/regional
areas

Restricted resources
re backbone
function & partner
engagement

Timing / flexibility
of project design

Post COVID impacts

What's working?

\$ millions of funding
for youth-focused
disaster efforts

Local young people
central to / leading
disaster project
design and delivery

Employment of
young people with
lived experience of
disasters in their
local communities

Improved
perceptions &
engagement of
young people by key
stakeholders

Stronger
relationships
between
organisations and
across regions

Future ambitions & opportunities

Centre of Excellence
in Young People &
Disasters

Young Thinkers in
Residence

Systems Leadership
Programs

Questions?

Katherine Ellis katherine@leadershipvictoria.org

Derm Ryan dryan@yacvic.org.au

Carla Hall chall@yacvic.org.au

<https://www.yacvic.org.au/rural/disaster-hub/>

<https://www.yacvic.org.au/get-involved/future-proof/>

<https://www.yacvic.org.au/>

<https://www.leadershipvictoria.org/>